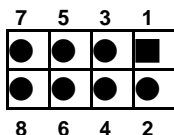


# PXE-9S2-R10

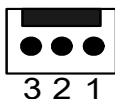
## 9-Slot PICMG 1.3 PCIe to PCI Bridge Backplane User Manual Ver. 1.0

### 1. USB1, USB2: External 4 Port USB Connectors From the Mainboard



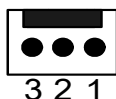
PIN	DESCRIPTION	PIN	DESCRIPTION
1	USBVCC	2	GND
3	DATA-	4	DATA+
5	DATA+	6	DATA-
7	GND	8	USBVCC

### 2. FAN1, FAN2, FAN3, FAN4 : Fan Connector



PIN	DESCRIPTION
1	GND
2	+12V
3	NC

### 3. ATXCTL1 : Backplane to Mainboard ATX Power Control Connector



PIN	DESCRIPTION
1	GND
2	PSON#
3	5VSB

### 4. PWRBTN : Power on Button



PIN	DESCRIPTION
1	GND
2	PWRBT#

### 5. RESET : Reset Button Connector



PIN	DESCRIPTION
1	GND
2	SHB_RST#

## 6.PWRGD : Power Good Connector



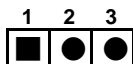
PIN	DESCRIPTION
1	GND
2	PWRGD

## 7. SM-BUS : External System Management BUS Connector



PIN	DESCRIPTION
1	SMDAT
2	SMCLK

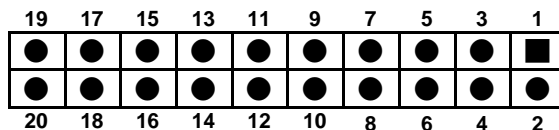
## 8. CN1 : PCIE X16 SDVO Control Signal Pin



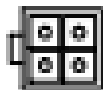
PIN	DESCRIPTION
1	EXP_EN
2	SDVO_CLK
3	SDVO_DAT

## 9. PWR1 : ATX Power Connector

ATX : ATX Power Connector			
PIN NO.	DESCRIPTION	PIN NO.	DESCRIPTION
1	+3.3 V	2	+3.3 V
3	GND	4	+5 V
5	GND	6	+5 V
7	GND	8	PWRGD_PS
9	5VSB	10	+12 V
11	+12 V	12	+3.3 V
13	+3.3 V	14	-12 V
15	GND	16	IO_PSON#
17	GND	18	GND
19	GND	20	N/A
21	+5 V	22	+5 V
23	+5 V	24	GND



**10, 12V1**



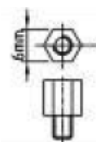
PIN NO.	DESCRIPTI ON	PIN NO.	DESCRIPT ION
1	+12V	2	GND
3	GND	4	+12 V

**11. PCI routing Table:**

SIGNAL	REQ#	GNT#	IDSEL	INTA#	INTB#	INTC#	INTD#
PIN No.	B18	A17	A26	A6	B7	A7	A8
PCI1	REQ0#	GNT0#	AD31	B	C	D	A
PCI2	REQ1#	GNT1#	AD30	C	D	A	B
PCI3	REQ2#	GNT2#	AD29	D	A	B	C
PCI4	REQ3#	GNT3#	AD28	A	B	C	D

**12. Notice:**

- a. Recommend to use 6mm width spacer to install



- b. Torsion must less than 6lb-inch

## 12. Dimension:

